

Bedale Church of England Primary School Newsletter

'Learning & Caring Together'



Newsletter Date: 26th November 2021

Dear Parents & Carers



We are now in the run up to Christmas, starting today with our Christmas Fair. Thank you to everyone who has supported us with this event, which seemed to be as popular as ever! It is wonderful to be able to run a 'normal' Christmas in school this year. Next week is our Christmas lunch on Thursday. Children are invited to wear Christmas jumpers. All dates of

our events were sent out on our last newsletter and are also on our calendar on the school website, if you lose track when things become so busy.

Many thanks for supporting our Children in Need event. I am delighted to share that we made £523.76 for this worthy cause which is fantastic!



There has been substantial interest in the possibility of us having a Wrap Around Care club in school. In the Spring term we will look at this more in depth, with the intention of setting this up from September 2022, for both before and after school care. Please note this service will be in term time only and will NOT be available in the school holidays.

Co-op: We were overwhelmed by the generosity of Bedale Co-op who on Saturday presented us with a cheque for a substantial amount of money raised through their community fund programme. A total of £9936.22 was raised which is tremendous! We are delighted that this will enable us to press ahead with our new project, a staging and some picnic seat areas, along the side of school for our pupils in KS2 to use at break and lunch times. It is so lovely for our pupils to enjoy the social aspect of being in school again after a very tricky 18 months!



Over the last few weeks, we have had lots of teachers from local schools visiting Mrs Sawyer and Mrs Hutchinson, who both work as maths mastery specialists for the Yorkshire Ridings Maths Hub. As part of the training, the visiting teachers observed lessons in Y3 and Y5 - they were extremely impressed by the behaviour and work ethic of the children. Well done!

Mrs Turnbull, Head Teacher

Parental Workshops

Thank you to those parents that have attended some of our recent parental workshops. We hope you found these beneficial. If you would like to offer any comments/feedback/need extra information or support please email school on admin@bedale-ce.n-yorks.sch.uk.

Out of School

BEDALE COMMUNITY LIBRARY - MORE THAN JUST BOOKS

The Library, housed in Bedale Hall, is now open after school on Wednesdays and on Saturday mornings. Opening times are as follows:

Tuesdays 10.00 am -4.00 pm

Wednesdays 2.00 pm -5.00 pm

Fridays 10.00 am -4.00 pm

Saturdays 10.00 am -12 noon

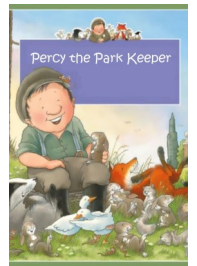
A Christmas Reading Challenge began on Saturday 20 November.

There is a regular story time session on Friday afternoons, at 2.15pm , for pre-school children.



EYFS News

It's very nearly Christmas time, and we have started to learn the songs for our Christmas play. The children have done so well with them! Last week we celebrated 'Friendship Week' and we thought about friendships and what it takes to be a good friend. Their understanding of friendship and compassion towards each other has been a delight to see. They have all made someone else in our class happy by saying and doing something kind. They have been talking about their unique qualities and why they are special. We enjoyed some lovely books including 'We're all wonders' and 'We're all welcome'. We also linked 'Friendship Week' to our Percy the Park Keeper work and we designed a new tree house for animals, thinking carefully about would make them happy!



We hope you have enjoyed your 'Love of Reading' book at home this week. Every week your child will choose a book to bring home to share with you. Please can this book be returned to school on a Thursday! Just a little reminder, please can you complete the homework assigned on Google Classroom weekly.

Year 1 News

The children in Year 1 have been sharing the story of Have you Filled a Bucket Today which is all about making others feel happy. We have been completing secret kindness missions in school and have written letters to our friends to make them smile.

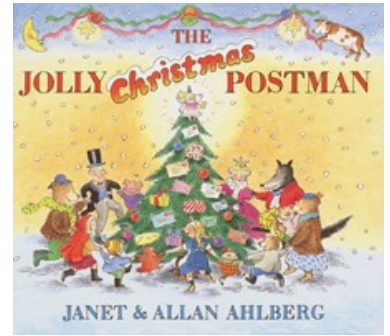
We hope your child has been enjoying their extra reading book and we will be changing those on Monday so please make sure they have it with them.



In history we are starting to look at toys from the past e.g old teddies, Jack-in the box and spinning tops. If you have any old toys that your child might like to share with us. Please bring in or take a photo and upload to Google Classroom.

Year 2 News

This week the children have worked very hard to complete their Autumn term assessments. We are ABSOLUTELY THRILLED with how well the children did on their Phonics Screening Check earlier this week. A special well done to a few children across the year group, who have been doing extra work during their lunch times to help them improve their reading.



Throughout the week, we have been practising our Christmas performance of The Jolly Christmas Postman. All of the children have been given parts to learn as best they can and will be reading these out to collectively recite the story. We are all looking forward to sharing the performance with you and giving you the chance to sing a few songs with us.

Year 3 News



Like the rest of school, the children of year 3 have worked hard with assessments this week. They have certainly given them a real good go, so well done everyone! When not doing assessments, we have been quite hands-on with other subjects. Our Lion King dance routines are making steady progress along with our musical rhythm when listening to Mamma-Mia.

Our minds have delved into the past to learn more about theatre in Bedale, in preparation for our Georgian Theatre visit. Furthermore, the children learnt about how pneumatics are used, and they even attempted to make a small model of one, before they look to designing and making an animal head that will open with the use of air! Excitement continued as Doctor Sawyer came in to give us a talk about keeping ourselves safe. We listened well and learnt a lot about what he had to say.

Year 4 News

This week we have been learning about the 10 commandments in RE focusing on Love thy neighbour, the children have shared some wonderful ideas relating to the importance of kindness. Ask the children about Queen Cartimandua; they have been busy evaluating the wisdom of her decisions in history and should now be experts.



In PE they are enjoying tennis and getting to the stage where they can start having mini tournaments. They have been working extremely hard during assessment week and we look forward to sharing their progress with you next week.

Year 5 News



In year 5, we have been planning a fair test in Science to see which cup will keep a hot drink the hottest for longest and making predictions about what we think might happen.

This week, we have started our Design Technology unit on structures and have been investigating different bridges which are local to Bedale. Over the weekend, keep your eyes peeled for any bridge designs which may help you when designing your own bridge!

Year 6 News

We could not be more proud of how well the Year 6s have approached their assessments this week.

Mrs Turnbull was in one of the reading assessments and said you could hear a pin drop because the children were so focused and determined to shine. Well done everybody - you've really shown us how hard you have been working all term.

This week we have also welcomed a visitor into school from the Muslim Learners' Service. Imran came to help us gain a deeper understanding of the 5 pillars of Islam, and the Ummah in particular. This supports our RE learning but also broadens our world view, helping us to continue to be reflective and sensitive global citizens.

As such, we are keen to begin our sponsorship of several orangutans. The money for helping the orangutans is steadily increasing, however, please can we have all remaining donations into school on Monday 29th November so it can be counted, and the sponsorships set up. Totals and what we have achieved will be in the next newsletter.

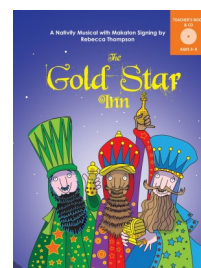
Finally, our Science, PSHE and PE studies are all coming together to help us understand how to be fit and healthy. Please support us at home by encouraging us/joining us to work out more and raise our fitness levels. We look forward to Dr Matt Sawyer joining us next week to consolidate this learning.



EYFS ,Year 1 & Year2 Christmas Performances



With regard to our forthcoming Christmas performances involving EYFS, Year 1 and Year 2 pupils, we are having to restrict families to two tickets per production only.



On-Line Safety

Some of you may have spotted a new regular feature on our Facebook page – a weekly guide from National Online Safety (www.nationalonlinesafety.com) as part of their #WakeUpWednesday project.



These will be shared every Wednesday and provide useful advice and tips, often based on current topical issues regarding online safety. We are now a member school of National Online Safety, who we will be working with as our online safety partner to provide training to staff, governors, parents and our pupils to keep up to date with news and issues in a constantly changing online environment.

BEDALE CHURCH OF ENGLAND PRIMARY SCHOOL
QUESTIONNAIRE FOR PARENTS – OCTOBER 2021

Whole School	Strongly Agree	Agree	Disagree	Strongly Disagree	Don't Know
My child is happy at this school	85%	15%			
My child feels safe at this school	86%	14%			
The school makes sure its pupils are well behaved	77%	22%	1%		
My child has been bullied and the school dealt with the bullying quickly and effectively.	18%	10%	3%	3%	66%
The school makes me aware of what my child will learn during the year.	71%	28%			1%
When I have raised concerns with the school they have been dealt with properly.	59%	19%	1%	1%	20%
Does your child have special educational needs or disabilities (SEND) YES or NO. If Yes: 18 NO 179 My child has SEND and the school gives them the support they need to succeed.	61%	10%	6%	6%	17%
The school has high expectations for my child.	68%	28%	2%		2%
My child does well at the school.	76%	23%	1%		
The school lets me know how my child is doing.	78%	20%	2%		
There is a good range of subjects available to my child.	79%	20%		1%	
My child can take part in clubs and activities at this school.	69%	30%			1%
The school supports my child's wider personal development.	74%	23%			3%
I would recommend this school to another parent.	Yes 99%		NO 1%		

Parental Surveys

Thank you to all our you who took the time to complete our survey at the recent open evenings in October. The results are on the opposite page. As a result of this survey things we have done/are in the process of doing are as follows:




- Informing parents (in writing) of how well their child has done in the assessments at the end of November.
- Mrs York has sent out a letter to all parents whose child is on the SEND register with an opportunity to discuss their specific support. Please get in touch if you have any concerns.
- New clubs were offered this term to year 1 and Year 2 pupils.
- Each term your child has an overview of their learning printed in their reading diary. In addition, the overviews for the whole year are available under the curriculum tab on our school website.

If any parent has concerns that we do not have high enough expectations for their child, please contact us on admin@bedale-ce.n-yorks.sch.uk.

ATTENDANCE

We have had an excellent start to the school year for attendance, an essential element to ensure our children receive the best possible education. Good attendance has been shown to have a positive effect on the performance of children during their school life. Thank you to all parents and carers for working with us to achieve such a high standard. Our attendance for the academic year so far is as follows:



Year Group	Attendance	No of Lates
Rec	95.5%	19
Y1	98.3% 	1
Y2	94.5%	19
Y3	95.6%	8
Y4	95.9%	4
Y5	96.8%	12
Y6	93.2%	12

Any child with attendance below 94% is seen as having poor attendance.